

11. konferenca / 11th Conference
Vernakularna arhitektura ALPE ADRIA
Vernacular Architecture ALPS ADRIA
Volksarchitektur im Raum ALPEN ADRIA
Architettura vernacolare nell'ambito dell'ALPE ADRIA
11./12.10.2001

2001 **11TH**



Konferenca ALPE ADRIA, pregled rezultatov

Conference ALPS ADRIA, Results



ALPE ADRIA / ALPS ADRIA / ALPEN ADRIA / ALPE ADRIA
www.alpe-adria.com

ALPE ADRIA / ALPS ADRIA / ALPEN ADRIA / ALPE ADRIA
www.alpe-adria.com

ALPE ADRIA / ALPS ADRIA / ALPEN ADRIA / ALPE ADRIA
www.alpe-adria.com

ALPE ADRIA / ALPS ADRIA / ALPEN ADRIA / ALPE ADRIA
www.alpe-adria.com

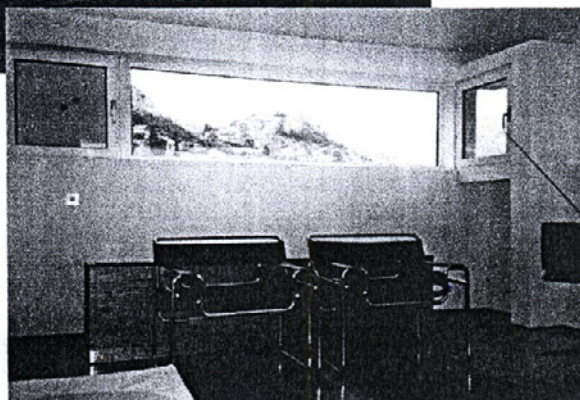
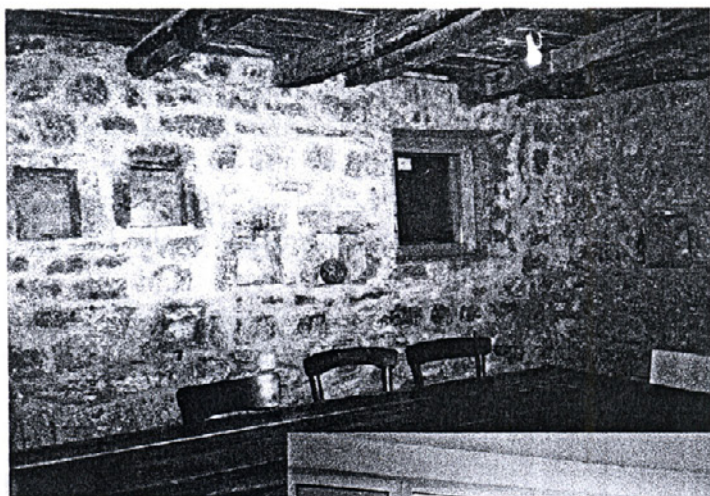
dr Lenko Pleština, Zagreb - Croatia

Kratke slike neke nove-stare kuće

Kuća se nalazi u povijesnom trokutu: A. Dioklecijanova palača u Splitu (Jadranska obala) B. ostaci rimske Salone C. srednjovjekovna Kliška tvrđava. Okolo su kamene planine (Mosor i Kozjak), a i prvi djelovi kuće, građeni pred oko stotinu i pedeset godina su od kamenog зида. Na prelazu XIX u XX stoljeće u blizini je podignuto šest tvornica cementa, pa su i neka daljnja dograđivanja izvedena iz betona. Danas kada je tržište građevnim materijalom globalno, upotrebjeno staklo je iz Italije, a šperploča iz Indonezije.

Najintrigantniji aspekt kuće je proces njenog nastajanja- početak je u sredini XIX stoljeća, nakon čega je svaka generacija ponešto dodavala. Najfascinantniji su pogledi iz kuće na otoke Brač, Hvar, Šoltu, Vis i Čiovo, grad Split i Solin, brodogradilište i tvornicu cementa, atraktivnu staru tvrđavu ili noću na čisto zvjezdano nebo. Najtempramentnije su atmosferilije u vrijeme jakih ljetnih čega (kada i požari mogu biti opasnost), hladnog zimskog vjetro bure ili naglih olujnih nevera. Najudobniji prostori u kući su tinal (soba za odmor), podmornica (stari podrum) i vidikovac na vrhu kuće. Najdominatnija vegetacija oko kuće su velika stabla lovora, oraha, murve, kostela i pitosfore, gustiš galopera i naravno neizbježna u ovom kraju, pergola od vinove loze.

Ova kuća je model rasta i promjena, osjećaj tradicionalizma i modernizma, koegzistencija starog i novog.



dr Lenko Pleština, Zagreb - Croatia
Short Cuts of one new-old House

The house is located inside the historic triangle: A: the Diocletian Palace in Split (Adriatic coast) B: ruins of ancient Roman city of Salona C: fortress of medieval Klis. Stony mountains (Mosor, Kozjak) are around and first parts of house, built about 150 years ago, are of stone masonry, too. At the turn of XIX/XX century six cement factories were erected nearby in the area and additional parts of house are made of concrete. These days the construction material market is global so that present glass used on house is from Italy, plywood is from Indonesia.

The most intriguing aspect of house is a process of erection- its first beginning is in the middle of XIX century and afterwards every generation added something. The most fascinating aspect is scenery around (islands of Brač, Hvar, Šolta, Vis and Čiovo, city of Split and Solin, shipyard and cement factory, cargoport and city stadium, etc) and a view on the clear night sky with thousands of twinkling stars. The most temperamental feature around is weather: summer heat (when a fire can appear easily), winter cold wind bura, unpredictable thunder storms. The most comfortable spaces in the house are tina (the relaxation room), the submarine (the old grandfather cellar) and the top belvedere room. The most unusual names are of big window (Picasso), of stone pile in the garden (Malaparte) and of fireplace (Titanic). The most dominant vegetation are big trees of laurel, nut, mulberry and pythospora, the row of iris and of course unavoidable winegrape trellis (pergola).

This house is model of growth and change, feeling of traditionalism and modernism, coexistence of old and new.

